



Picture of the Part



Application

WPANT30003-CC Antenna is a 915 MHz & 2.4 GHz ISM Band & WiFi Omni Directional Body-mount Antenna, which is ideal for mounting on any metal structures / surfaces. Compact Size and Impressive Performance are the key features of this Proprietary Design. It comes with a Type-N Female Jack with a Flat end connector.

WP Wireless can assist your engineers to optimize mounting positions for these antennas in your specific application and can further assist to trouble shoot system integration issues such as TRP/TIS and FCC requirements. WP Wireless specializes in developing customized Antenna solutions. Please contact sales@wp-wireless.com with your specific application requirements.

Electrical Properties

Parameter	Antenna Performance	
Operating Frequency	902 – 928 MHz	2.4 – 2.5 GHz
Recommended Impedance of the customer Radio Module[Ω]	50Ω	50Ω
VSWR – Typical*	<2:1	<2:1
Peak Gain [dBi] (Typical)*	1.5 – 1.8 dBi	2.5 – 3 dBi
Efficiency [%] (Typical)*	65 - 80%	65 - 70%
Polarization	Linear	Linear
Pattern	Near Omni Directional; Also depends on installation	Near Omni Directional; Also depends on installation
Accepted Power [W] (Max) *	2 Watts	2 Watts

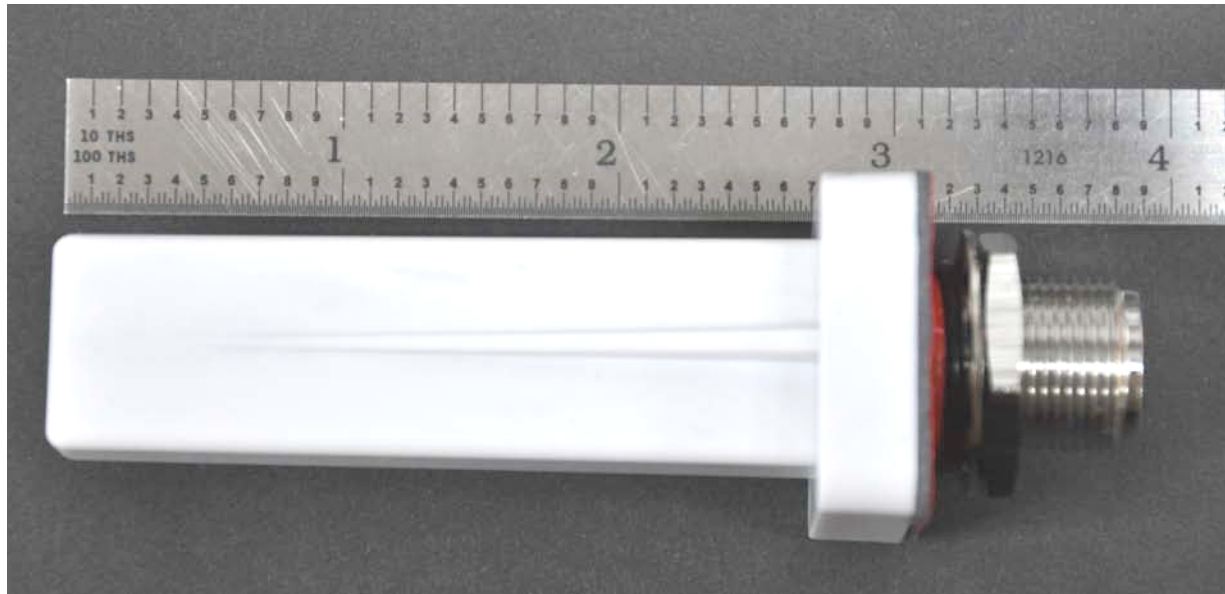
*Note: RF Performance Metrics recorded with Antenna placed on top of a Rectangular Metal Box, with dimensions of 10" X 8" X 5".



Mechanical / Environmental Properties

Item	Value
Dimensions	76mm X 30mm X 30mm (L X W X D)
Antenna Color	Cool Grey
Connector	Type-N Female Jack with a Flat end
Antenna Plastic Radome	ABS + Polycarbonate
Washer & other outer Metal Parts	Stainless Steel
Main Gasket covering the Base	1.5mm Thick Black 3M Gasket (not shown)
Connector Plating	Nickel + Chromium Alloy
Operating / Storage Temperature	-40°C to +90°C
Environmental	Meets standards for UL 94V-0
Hazardous Materials	RoHS compliant

Pictures of the Antenna (antenna itself and as mounted on top of a Metal Box)







VSWR of the Antenna, installed on a Metal box

