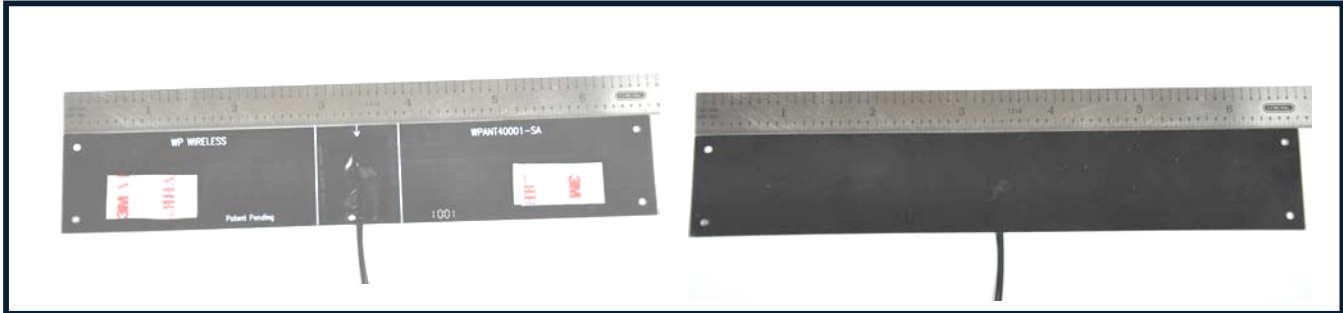


Picture of the Part



Application

The WPANT40001-SC1 antenna is a standard WP Wireless antenna, designed for Metering applications that operate in US Cellular band. The antenna is designed such a way that it performs optimum when it is wrapped around a meter's surface, as shown in the pictures in the following pages. It is designed to operate with healthy efficiency figures in both 824-894 MHz & 1850-1990 MHz bands, in spite of the heavy interference (Noise/ RF blockage) inside of a typical meter. The Antenna, if installed right, can provide best Signal / Noise figure for the overall RF system. This particular configuration of the antenna comes with a 200mm 1.13mm dia micro co-ax cable and an IPEX / Hiroshie equivalent connector.

WP Wireless can assist your engineers to optimize mounting positions for these antennas in your specific application and can further assist to trouble shoot system integration issues such as TRP/TIS and FCC requirements. WP Wireless specializes in developing customized Antenna solutions. Please contact sales@wp-wireless.com with your specific application requirements.

Electrical Properties

Parameter	Antenna Performance	
Operating Frequency [MHz]*	824 – 894 MHz	1850 – 1990 MHz
Recommended Impedance of the customer Radio Module[Ω]	50Ω	50Ω
VSWR – Typical*	<2.5:1	<2.5:1
Peak Gain [dBi] (Typical)*	1.5 - 2.5 dBi	2.5 - 3.5 dBi
Efficiency [%] (Typical)*	60-65%	55-65%
Polarization	Linear	Linear
Pattern	Near Omni Directional	Near Omni Directional
Accepted Power [W] (Max)*	2 Watts	2 Watts

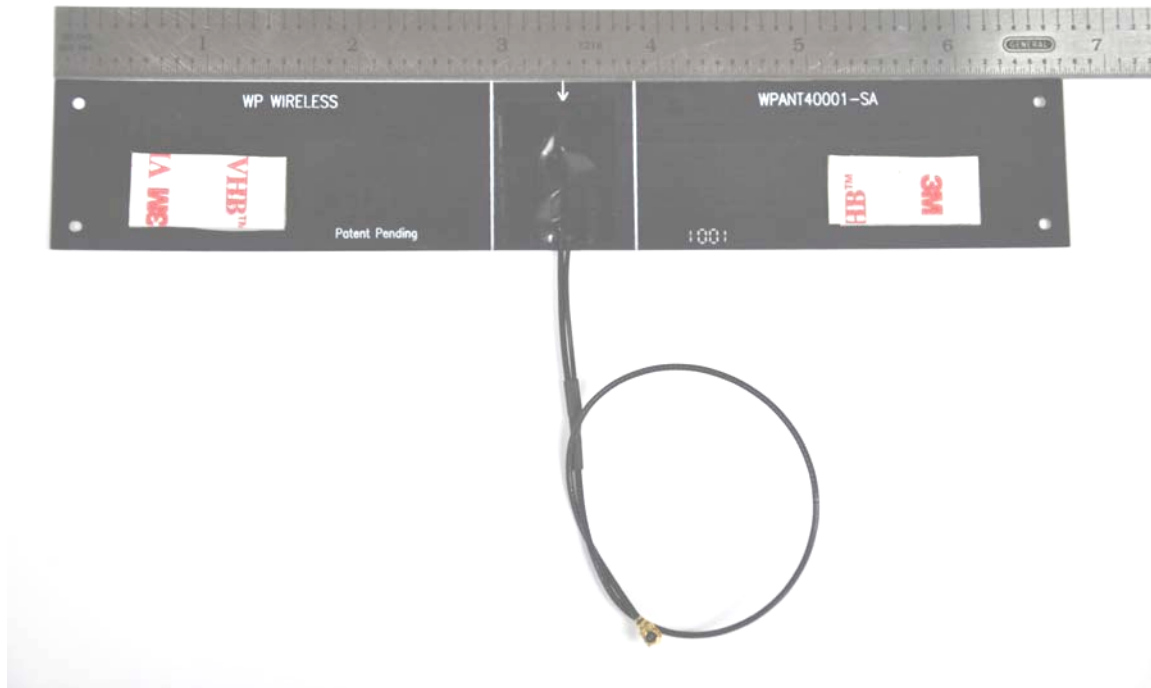
*Note: The above mentioned relevant performance metrics are recorded with the Antenna wrapped around (installed) the meter's surface, inside the upper plastic cap/drum

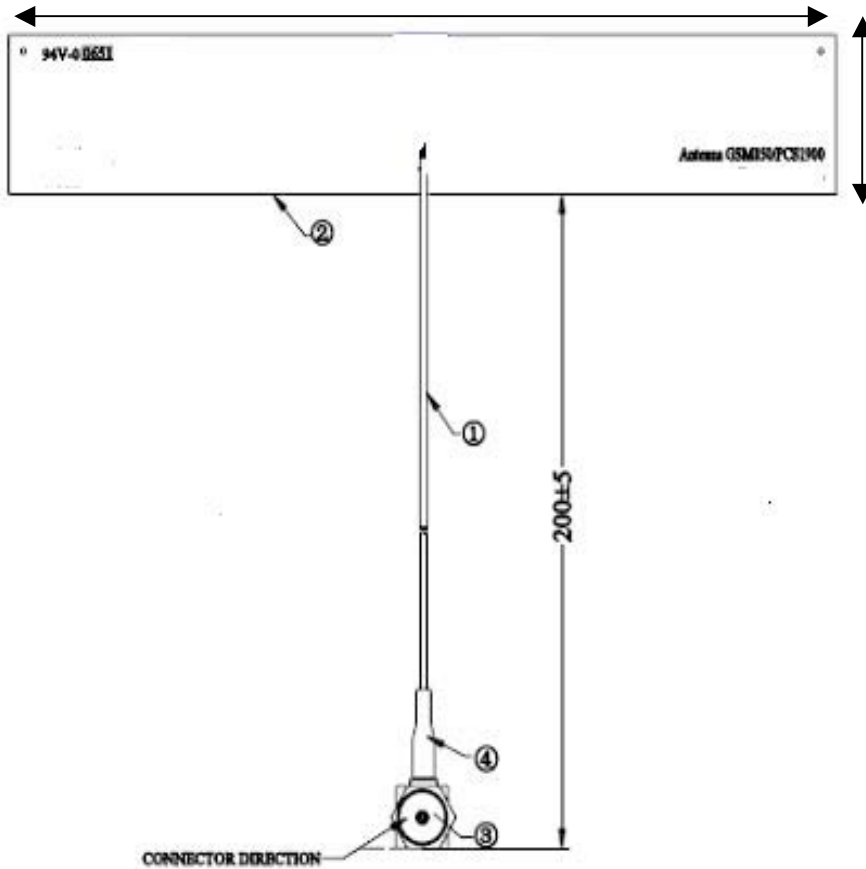


Mechanical / Environmental Properties

Item	Value
Antenna Dimensions	170mm X 29.5mm X 0.25mm (L X W X T)
Cable Length	200 mm long (from the edge of the PCB) 1.13mm OD Micro-Coax
Connector	IPEX / Hirose equivalent
Antenna Color	Black
Operating / Storage Temperature	-40°C to +90°C
UV Tolerance	100% UV Resistant
Environmental	Meets standards for UL 94V-0
Hazardous Materials	RoHS compliant

Pictures of the Antenna







Pictures of the Antenna as installed on a typical Electric Utility Meter

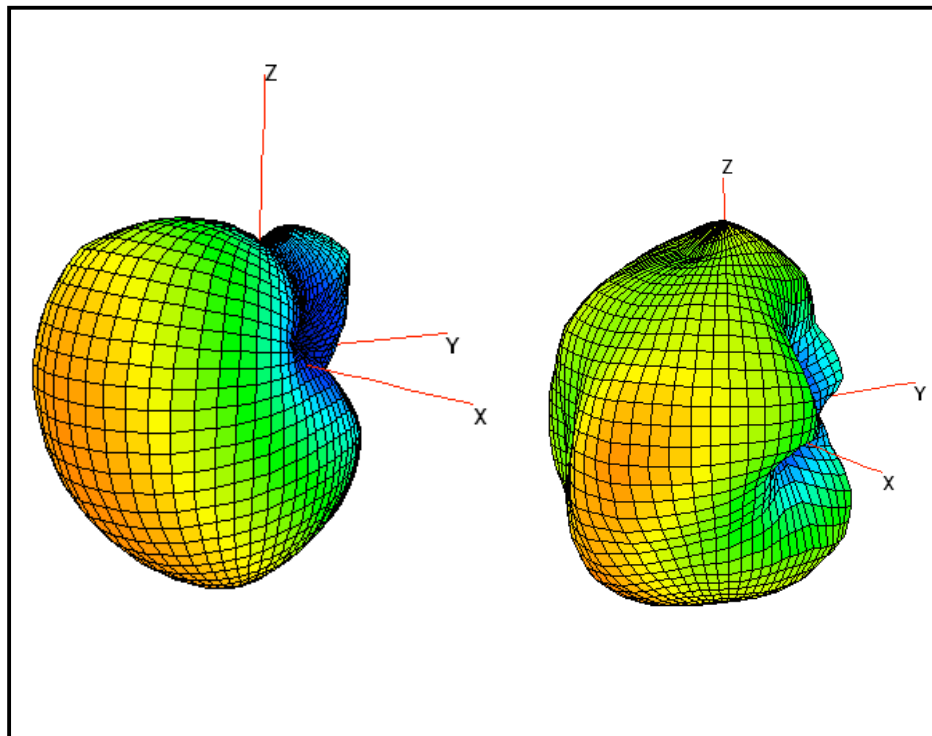




850MHz (Eff. 62%)

1920MHz (Eff. 60%)

3D Antenna Radiation Pattern – as installed on the Meter



Note: The 3D Gain pattern and efficiency shown above is as measured with the antenna mounted on a particular GE meter at 3'O Clock position.